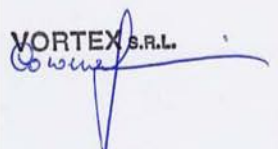


VORTEX s.r.l. Via Scarpone, 39 I – 27100 PAVIA	HOMOLOGATION FORM for ENGINE cl. 125 cc.	Form.
-------------------------------------------------------------	--------------------------------------------------------------	-------

Manufacturer	VORTEX s.r.l.
Make	VORTEX s.r.l.
Model	ROK TT
Inlet type	REED VALVE
Number of pages	9

PICTURE OF ENGINE



Official TAG Signature and Stamp	Importer Signature and Stamp
	

TECHNICAL INFORMATION		
A	CHARACTERISTICS	
	Measurement	Tolerances
Volume of cylinder	123.9 cc	
Original bore	54.05 mm	
Theoretical maximum bore	54.28 mm	
Stroke	54.00 mm.	
Cooling system	WATER-COOLED	
Number of carburation systems	1	
Number of transfer ports/ducts, cylinder/sump	3/3	
Number of exhaust ports/ducts	3	
Shape of combustion chamber	Spherical with squish	
Length between axes of the Connecting rod	102 mm	
Minimum weight of connecting rod	110 g	MIN
Volume of combustion chamber		MIN
Type of bearings and size	Big End of Rod Bearing= 20x26x15 Little End of Rod Bearing= 14x18x17 Crankshaft Bearing= 25x52x15	

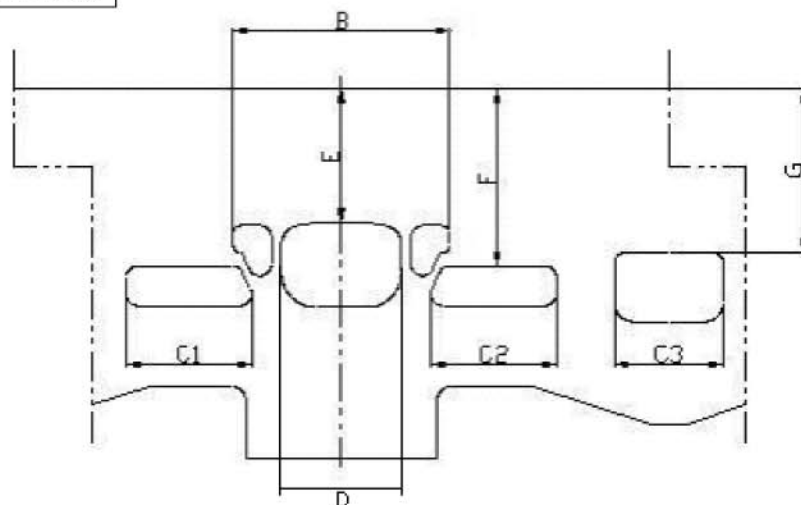
B	OPENING ANGLES (all measurements done with 0.2mm gauge)	
		Tolerances
Inlet		
Exhaust	173°	

C	LIST OF ACCESSORIES INCLUDED	
Carburettor	Tillotson HL 360 A ONLY Carburettor ø24 with integrated fuel pump	
Battery charging	External battery charger	
Electric starter	On board	
Exhaust with flex	Exhaust with silencer	

D	MATERIAL	
Cylinder	AL – SI ALLOY	
Connecting rod	NI – CR – MO STEEL	
Crankshaft	NI – CR – MO STEEL	
Head	AL – SI ALLOY	
Liner	IRON	
Crankcase	AL – SI ALLOY	
Piston	AL – SI ALLOY	
Piston Ring	STEEL OR IRON	

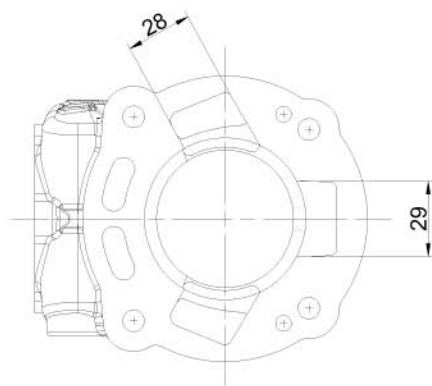
DRAWING OF THE CYLINDER DEVELOPMENT

B	54 mm
C1=C2	28.0mm
C3	28.2mm
E	173° MAX
F	127° MAX
G	135° MAX
D	37.25mm MAX



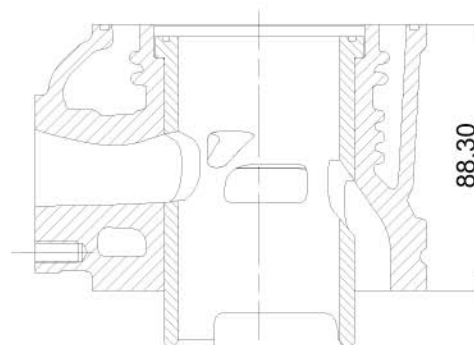
Angular reading by 0.2mm feeler gauge

DRAWING OF THE CYLINDER BASE



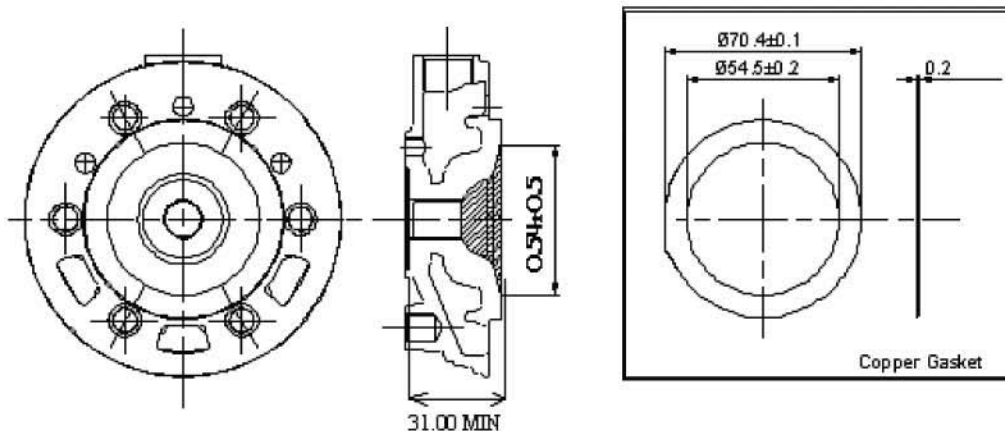
±1mm

CILINDER SECTION VIEW

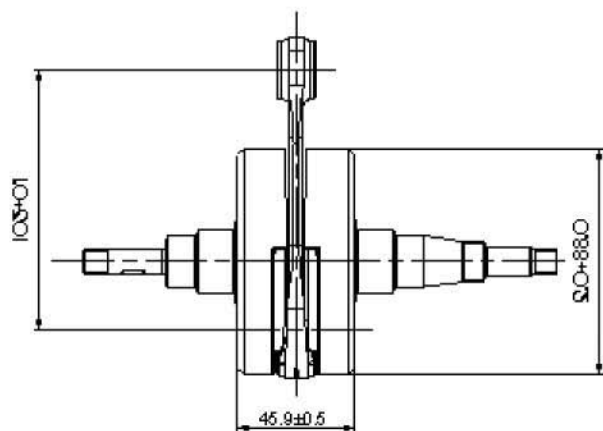


±0.25mm

DRAWING OF THE CYLINDER HEAD AND COMBUSTION CHAMBER

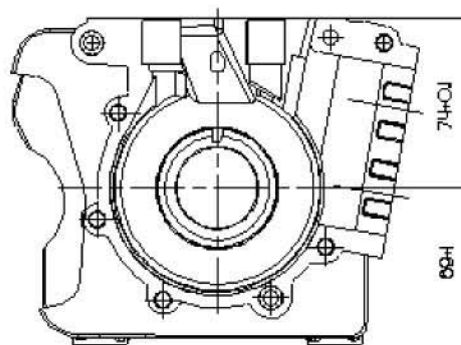


DRAWING OF THE CRANKSHAFT






Weight= 1860g ± 10g

DRAWING OF THE INSIDE SUMP



IGNITION	
Manufacturer	SELETTA – 36/A/09
Model Number	
Rotation	COUNTERCLOCKWISE
Setting Specification	

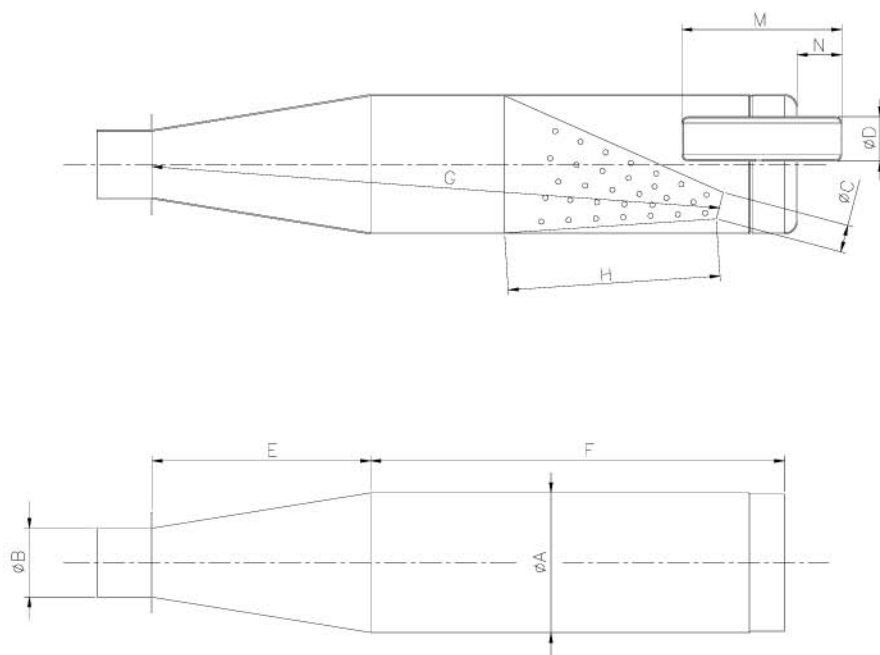
PHOTO OF IGNITION	PHOTO OF COIL
	
	

CARBURETTOR DIMENSION

TILLOTSON HL 360 A ONLY **max. Reed Thickness 0.008"**

PISTON	CONNECTING ROD
<p>Weight = 125g</p>	<p>Weight = 130g</p>

DRAWING OF THE SILENCER AND IT'S COMPONENTS

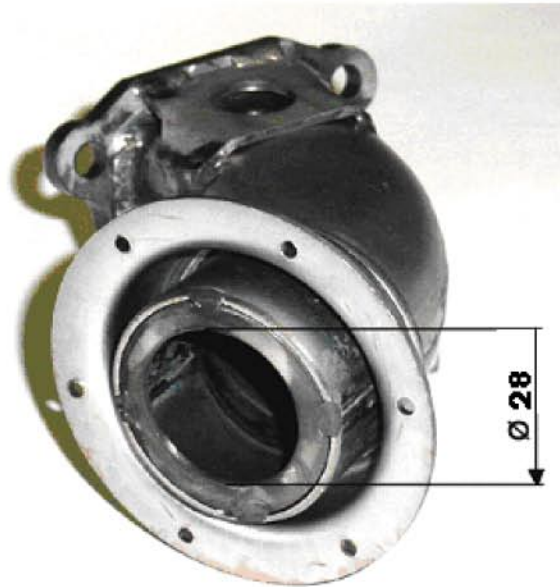


The end parts of the silencer must have two soldered pairs of lugs (one pair at the top and one pair at the bottom) to allow for fixing of seals by the Organizer so that the silencer may be opening during the competition.

Measurements:

- A: $\varnothing 100$
- B: $\varnothing 54$
- C: $\varnothing 21$
- D: $\varnothing 35$
- E: 172
- F: 315
- G: 490
- H: 171
- M: 130
- N: 35

OPTIONAL RESTRICTED HEADERS FOR JUNIOR CLASSES



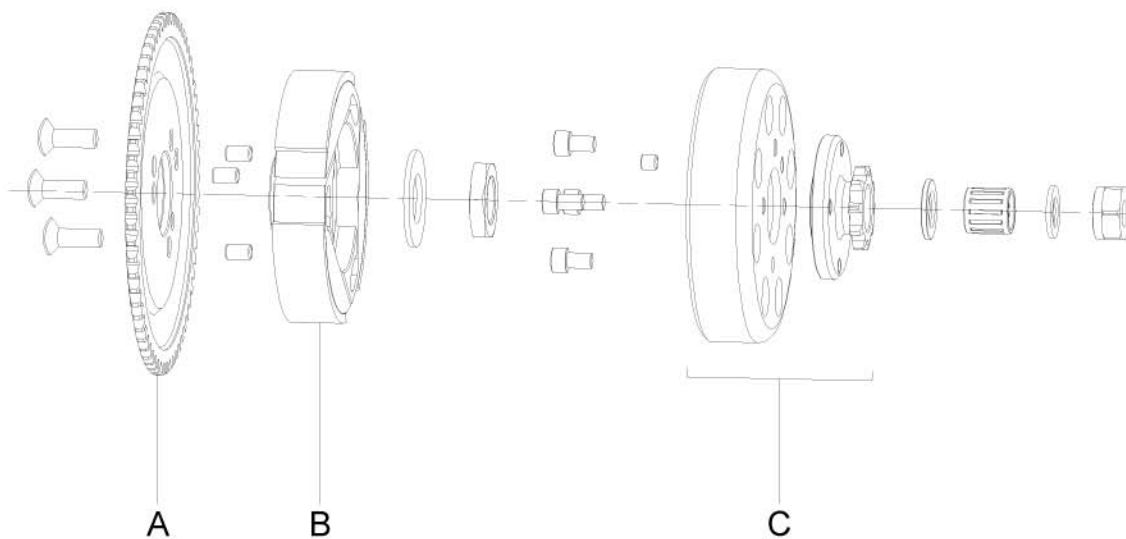
28MM MAX I.D. RESTRICTOR

HEADER FOR SENIOR CLASSES



42MM MAX I.D.

DRAWING OF THE CLUTCH



Item weight and tolerance: A= 115g ; B= 420g Minimum ; C= 280g Minimum

PHOTO OF THE CLUTCH COVER



TYPE: CIK APPROVED DRIVE COVER Technical Item