

INTERNATIONAL KART FEDERATION

Manufacturer Address

Motori Seven

Via Perticara 130

47023 Cesena (fc) Italy



TAG™ Engine
INTERNATIONAL
KART FEDERATION

Manufacturer Motori Seven	
Make	
Model Tag L4 SENIOR	
Inlet type Carburator Dell'orto ø 30	
Number of pages 10	

PICTURE OF ENGINE

(insert picture of front/left here)

(insert picture of back/right here)

NOTE:
Some cylinders supplied by the manufacturer have a yellow "Motori Seven sticker" instead of the "cast" logo.



--	--

Importer	MIKE MANNING KARTING 3351 75TH STREET WEST ROSAMOND CA 93560
----------	---

TECHNICAL INFORMATION

A	CHARACTERISTICS	
	Measurement	Tolerances
Volume of cylinder	124.58 cm ³	125 cm ³
Original bore	54.00 mm	
Theoretical maximum bore	54.08 mm	
Stroke	54.40 mm	
Cooling system	Water cooled	
Number of carburation systems	1	
Number of transfer ports / ducts, cylinder / sump	5	
Number of exhaust ports / ducts	1	
Shape of the combustion chamber	Spherical – with squish	
Length between axes of the connecting rod	110	+/- 0.1 mm
Minimum weight of connecting rod	130 ± 10 grams	
Volume of combustion chamber	9.5 cc Assembled w/o LAD Tool	
Type of bearings and size	<i>(example) 6205 type</i> Big End of Con. Rod Bearing = 20 X 26 X 15 Little End of Con. Rod Bearing = 15 X 19 X 20 Crankshaft Bearing = 25 X 52 X 15	

B	OPENING ANGLES	
Exhaust	182	
Of exhaust ports / ducts	128-135	

C	LIST OF ACCESSORIES INCLUDED	
<i>(List accessories as shown below)</i>	<i>Centrifugal clutch YES</i>	
<i>Carburetor dell'orto Ø30</i>		
<i>Generator for battery charging NO</i>		
<i>Electric starter YES</i>		
<i>Exhaust with flex NO</i>		

D	MATERIAL	
Cylinder	<i>Aluminium AL-SI</i>	
Connecting rod	<i>Steel Ni cr mo</i>	
Crankshaft	<i>Steel Ni cr mo</i>	
Head	<i>Aluminium AL-SI</i>	
Liner	<i>Aluminium + nicasil</i>	
Crankcase	<i>Aluminium AL-SI</i>	
Piston	<i>Aluminium AL-SI</i>	
Piston Ring		

**DRAWING OF THE CYLINDER DEVELOPMENT***(Insert drawing here)***Chord reading**

$$B = 52.8$$

$$C1 = 22.7$$

$$C2 = 21.7$$

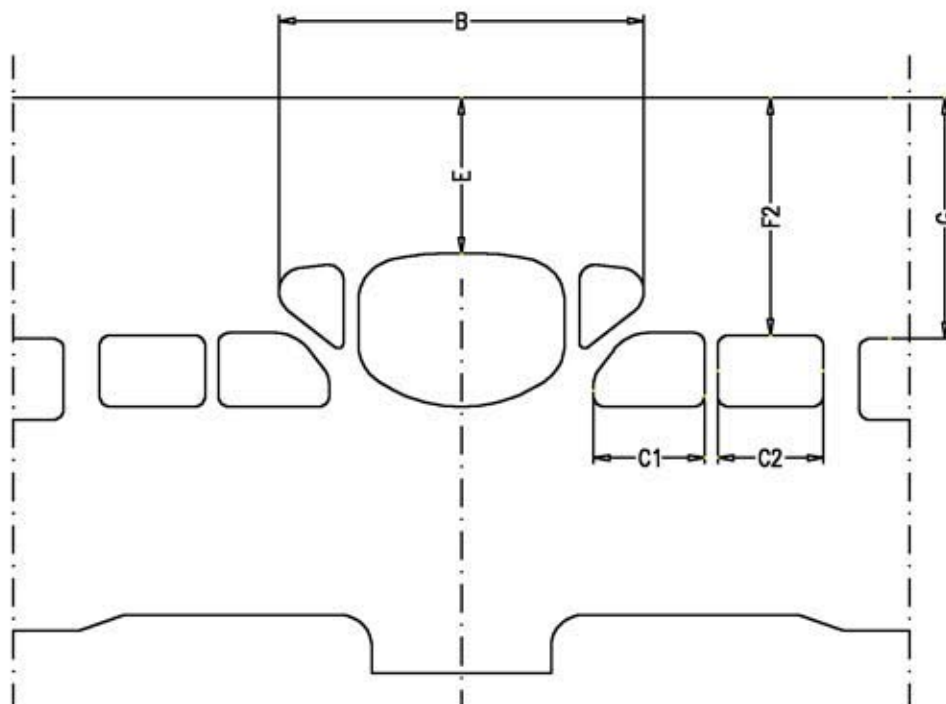
Angular reading by inserting a 0.2mm gauge

$$E = 33.2$$

$$F = 44.3$$

$$G = 44.3$$

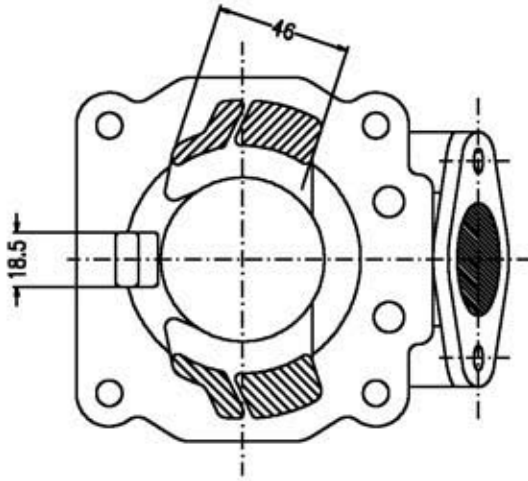
TOLERANCES:
PLUS 1MM
MINUS 2MM



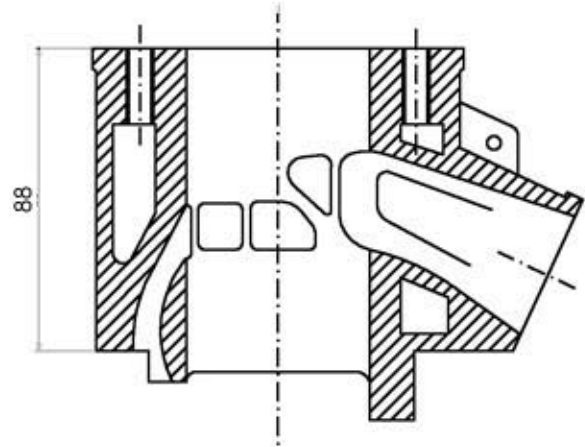
DRAWING OF THE CYLINDER BASE

CYLINDER SECTION VIEW

(Insert drawing here)



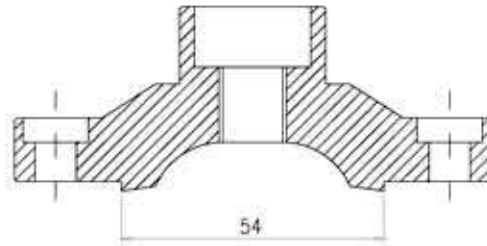
(Insert drawing here)





DRAWING OF THE CYLINDER HEAD AND THE COMBUSTION CHAMBER

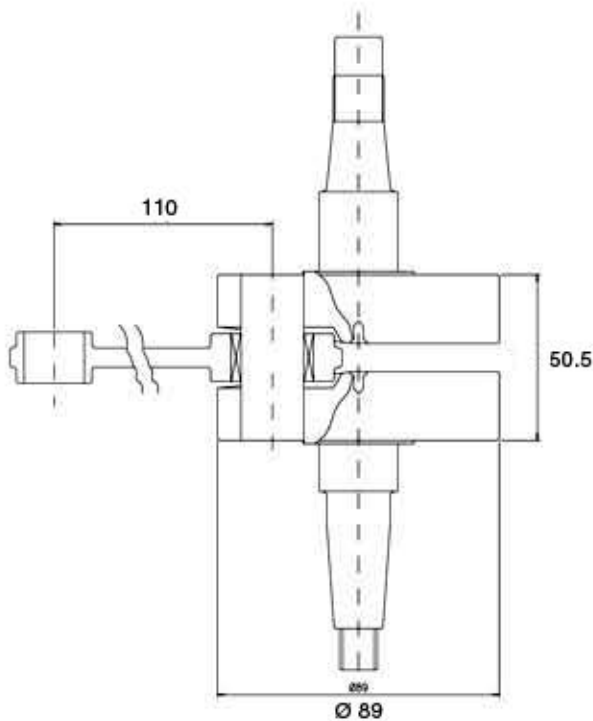
(Insert drawing here)



Combustion chamber volume = 9 c.c. minimum

DRAWING OF THE CRANKSHAFT

(Insert drawing here)





DRAWING OF THE INSIDE OF SUMP

(Insert drawing here)



Complete weight = Kg 2,430 Tolerance= ± gr100



IGNITION	
Manufacturer PVL	
Model Number 06000160	
Rotation P 3356	
Description	
PHOTO OF IGNITION	PHOTO OF COIL
<i>(insert photo of inside here)</i>	<i>(Insert photo here)</i>
 <p>Timing: .060 - .075 btdc</p> <p>ONLY PLV IGNITION ALLOWED</p> <p>Stator has been supplied with both cloth-wrapped and potted coils. Both are legal.</p>	 <p>Coil has been supplied with both red and black coils. Both are legal.</p> <p>Part Numbers are: Red - 500.178 Black - 105.458</p>

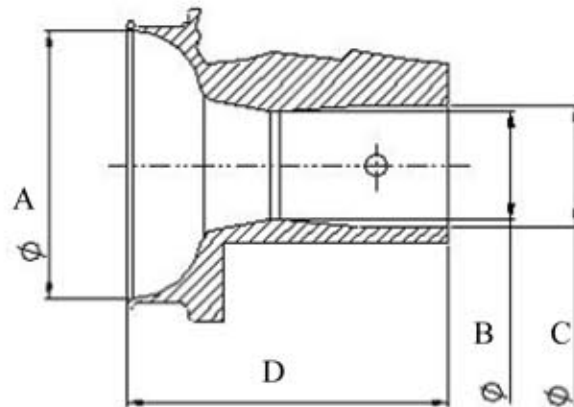
**CARBURETOR DIMENSION***(Insert drawing here)***Item
Measure
Tolerance**

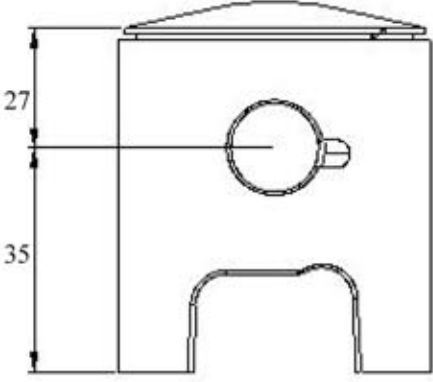
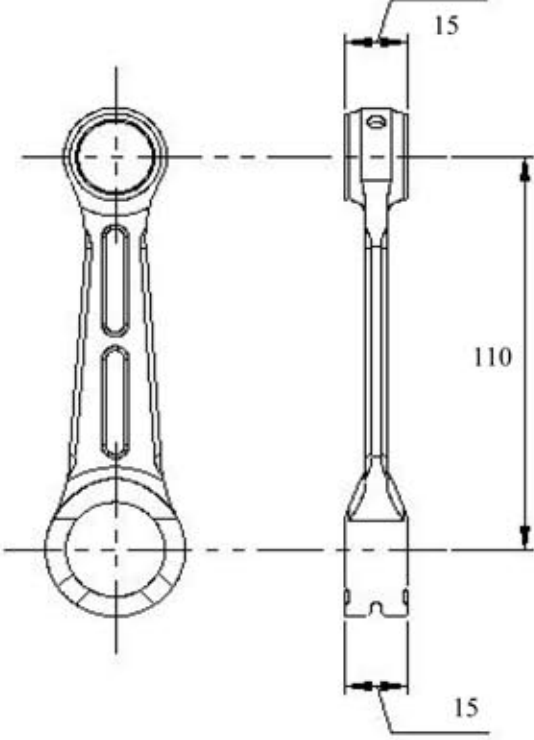
A = 58,5

B = 30

C = 30

D = 88.5

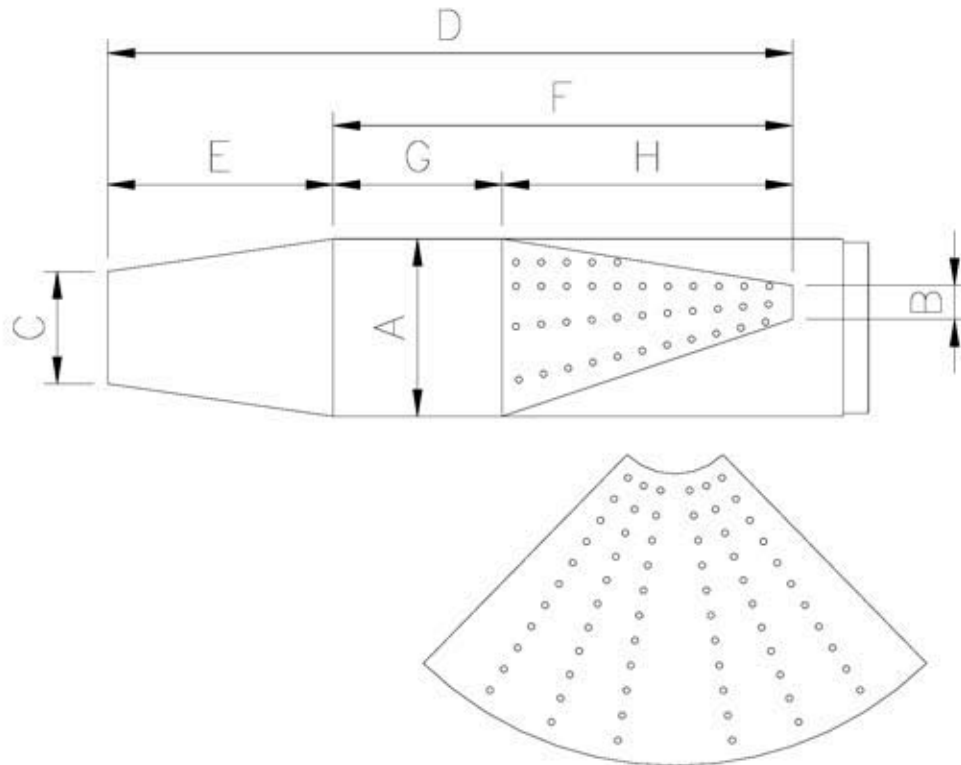


PISTON	CONNECTING ROD
<p data-bbox="305 321 597 359"><i>(Insert drawing here)</i></p>  <p data-bbox="94 1188 675 1230">Weight= 116 gr Tolerance= ± 5 gr</p>	<p data-bbox="1027 321 1320 359"><i>(Insert drawing here)</i></p>  <p data-bbox="816 1188 1409 1230">Weight= 120 gr Tolerance= ±10 gr</p>



DRAWING OF THE SILENCER AND IT'S COMPONENTS

(Insert drawing here)



The end parts of the silencer must have two soldered pairs of lugs (one pair at the top and one pair at the bottom) to allow for fixing of seals by the Organizer so that the silencer may be opened during the competition

TOLERANCES

Rough Dimensions

up to 25mm: $\pm 1\text{mm}$
 from 25 – 60mm: $\pm 1.5\text{mm}$
 more than 60mm: $\pm 3\text{mm}$

Measurements:

A: 115
 B: 20
 C: 66.5
 D: 405.5
 E: 133.5
 F: 272
 G: 100
 H: 172

DRAWING OF THE CLUTCH*(Insert drawing of clutch used)***Item**
Weight
Tolerance

A = 127

B = 105.5

C = 114

